



IS USED BY





**ENSURE THE DOORFRAME HAS 42mm VISIBLE  
FRAME FOR LOCATING A.I.M**

**USE THE CHASIS AND COVER TO CHECK  
CLEARANCES**



**DIS-ASSEMBLE BOXED UNIT AND USE CHASIS TO MARK EIGHT PILOT HOLES AT SHOULDER HEIGHT APPROXIMATELY 1.5m OR 5ft FROM THE GROUND KEEP AWAY FROM LEVER ASSEMBLYS**



**DRILL 1/8 PILOT HOLES ENSURING THE DRILL BIT IS SET SHORT SO NOT TO PASS THROUGH THE FRAME**



**USE THE 4 COUNTERSUNK SCREWS PROVIDED  
TO SECURLY MOUNT THE CHASIS**

**DO NOT OVERTIGHTEN**



**BRASS CLASP USE CHROME SCREWS PROVIDED  
CHROME CLASP USE BRASS SCREWS PROVIDED  
TO MOUNT SECURITY CHAIN THROUGH CHASIS**

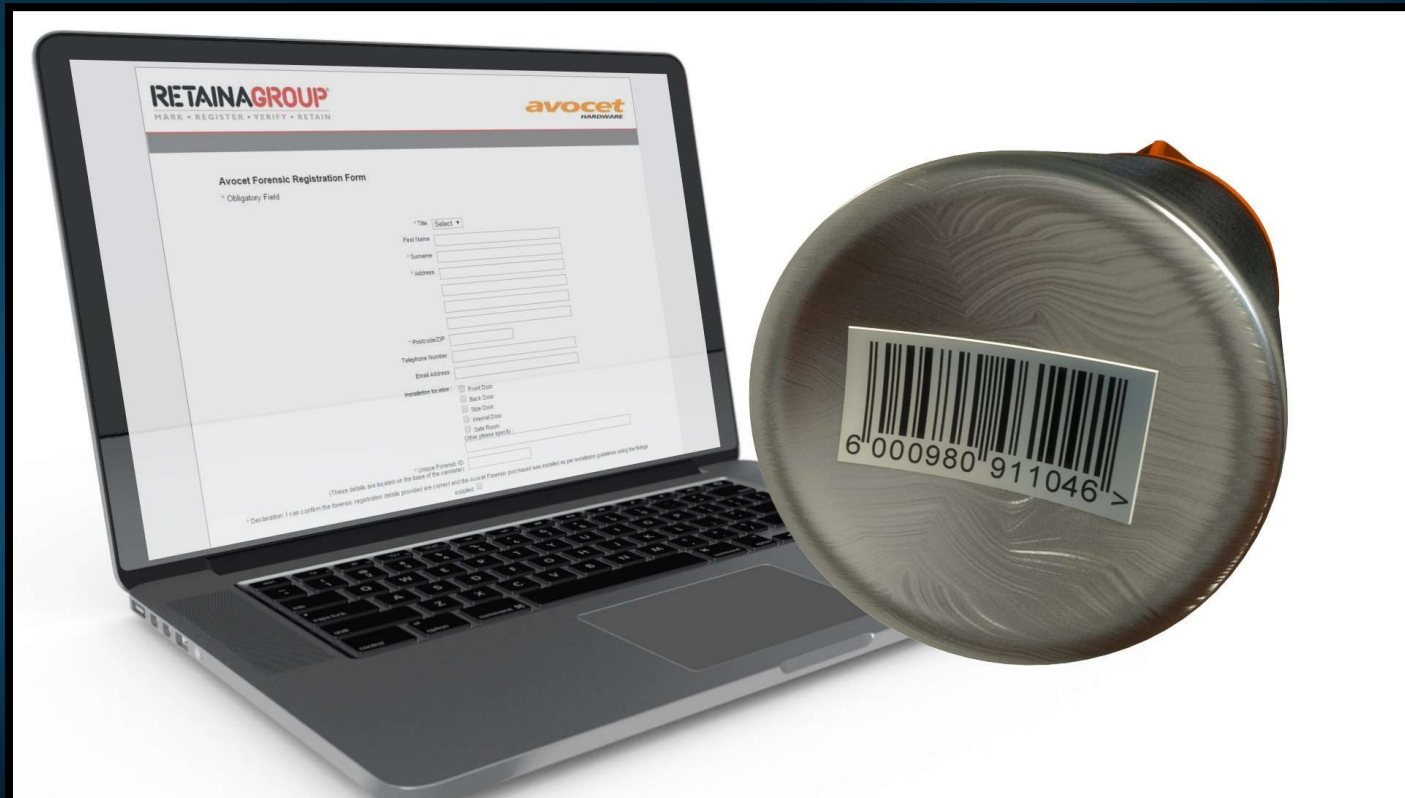


**SECURELY FASTEN CHAIN THROUGH CANISTER  
HOUSING ONTO FRAME BUT DO NOT OVERTIGHTEN**

# FORENSIC REGISTRATION

THIS PROCESS MUST BE CARRIED OUT BY THE SECURITY PROFESSIONAL WHO INSTALLED AN A.I.M FORENSIC DOOR ALARM AND IT IS IMPORTANT THAT ALL RELEVANT SECTIONS ARE COMPLETED ESPECIALLY THE UNIQUE FORENSIC CODE DETAIL LOCATED ON THE BASE OF THE ALARM/CANNISTER OR INSIDE THE SAFETY CAP.

FORENSIC REGISTRATION GO TO [WWW.AIMDNA.COM](http://WWW.AIMDNA.COM)

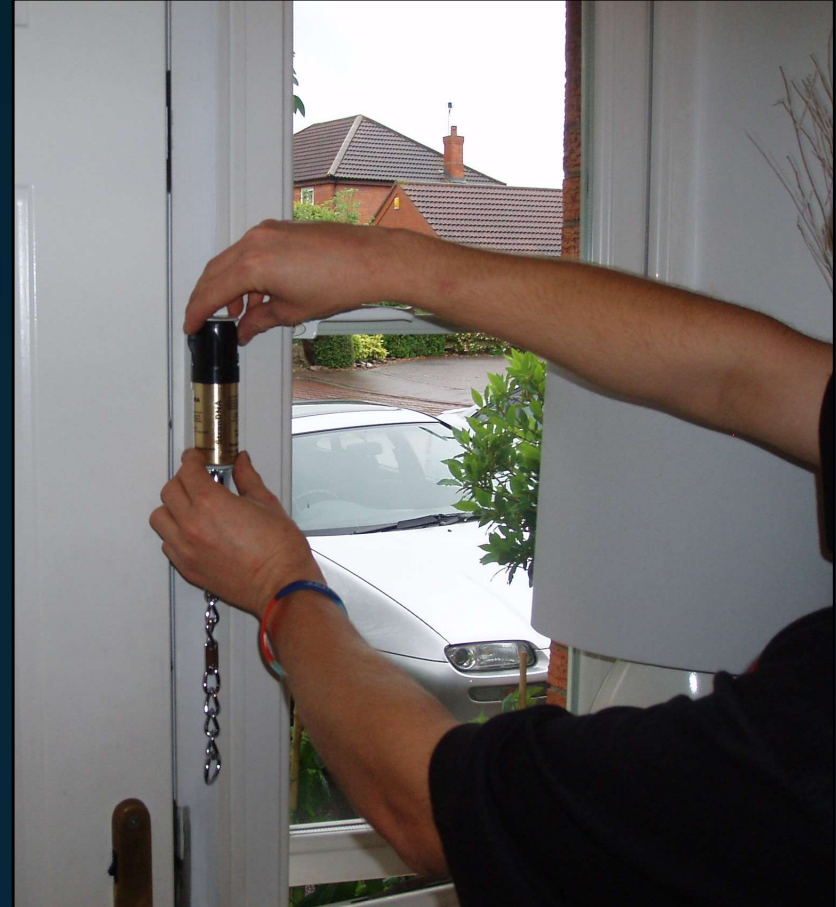




**REMOVE ALARM HEAD &  
WHITE SAFETY CAP**

**GENTLY REST ALARM  
HEAD ON TOP OF  
CANISTER ENSURING YOU  
DO NOT PUSH DOWN**

**HOLDING THE CANISTER  
LOCATE ON THE BASE  
PLATE AND PUSH DOWN &  
BACK INTO PLACE THEN  
GENTLY ROTATE  
EVACUATION POINT  
TOWARD THE OPENING  
SIDE OF THE DOOR**






**INSERT EVACUATION  
COVER TO THE SIDE  
NOT TO BE USED &  
PLACE COVER OVER  
THE TOP OF THE  
ALARM HOUSING AT  
THE TOP THEN PUSH  
BACK INTO PLACE**

**THE GRILL OF THE  
ALARM SHOULD BE  
FACING TOWARD THE  
OPENING OF THE DOOR**



**A.I.M  
INSTALLED**



**SECURE THE COVER  
INTO PLACE AT THE  
BASE THROUGH THE  
PILOT HOLES USING  
THE SMALL PHILLIPS  
SCREWS PROVIDED**





**INSTALL THE CLASP IN  
LINE WITH THE BASE OF  
A.I.M**

**ENSURE THERE IS 15mm  
GAP FROM THE EDGE OF  
THE DOOR IF FITTED WITH  
A COUNTER LEVER  
LOCKING ASSEMBLY**

**DO NOT OVERTIGHTEN**



**AFFIX WARNING  
STICKERS TO  
WINDOWS OR GLASS  
PARTITIONS AT THE  
FRONT AND BACK OF  
YOUR PROPERTY**





## AVOCET INTRUDER MANAGEMENT INSTALLED






**AVOCET INTRUDER MANAGEMENT  
IN USE**



**AVOCET INTRUDER MANAGEMENT**

**IN USE**



**CHECKING THE  
IDENTITY OF THE  
CALLER PRIOR TO  
ALLOWING THEM  
ACCESS INTO YOUR  
HOME**



**A.I.M CAN ALSO BE  
INSTALLED ON  
BACK & PATIO  
DOORS TO BE USED  
AS AN OPT-OUT  
DOOR SECURITY  
DEVICE**



# FORENSIC SECURITY SYSTEM

